



CONSOLIDATED TEST RESULTS SUMMARY

Please see the following pages for full test results.

DRYCP50	CA48(C)	NR: Not Reported NA: Not Available
50MG DRY CAPSULES	SERVING SIZE: 1 CAPSULE	LOQ: Limit Of Quantitation LOD: Limit Of Detection
LABORATORY: PIXIS LABS	OREGON ACCREDITATION: OR100028	1 g = 10 ⁻³ kg = 10 ³ mg = 10 ⁶ µg 1 mg/kg = 1 ppm = 1000 ppb

POTENCY	PER SERVING	PER GRAM	REGULATORY ACTION LEVEL
Cannabidiol (CBD)	50.33 mg/serving	165 mg/g	N/A
Total THC (d9-THC + d8-THC)	0.65 mg/serving	2.13 mg/g	3 mg/g
Cannabigerol (CBG)	0.30 mg/serving	0.974 mg/g	N/A
Cannabinol (CBN)	<LOQ mg/serving	<LOQ mg/g	N/A
Cannabichromene (CBC)	0.91 mg/serving	2.97 mg/g	N/A

HEAVY METALS	PER SERVING	PER GRAM	REGULATORY ACTION LEVEL
Arsenic	<LOQ µg/serving	<LOQ µg/g	10 µg/day ^[1]
Cadmium	<LOQ µg/serving	<LOQ µg/g	4.1 µg/day ^[1]
Lead	<LOQ µg/serving	<LOQ µg/g	3.5 µg/day ^[2]
Mercury	<LOQ µg/serving	<LOQ µg/g	2 µg/day ^[1]

PESTICIDES	REGULATORY ACTION LEVEL
None of the 59 pesticides tested found above limit of detection in the sample.	10 ppb ^[1]

RESIDUAL SOLVENTS
None of the 36 residual solvents tested found above limit of detection in the sample.

MICROBIAL	PASS/FAIL
Yeast & Mold	Pass
Coliform	Pass
Water Activity	Pass

TERPENES	% OF SAMPLE
Farnesene	0.0688%
β-Caryophyllene	0.346%
α-Bisabolol	0.0342%
β-Myrcene	0.119%

TERPENES	% OF SAMPLE
Limonene	0.165%
Humulene	0.0654%
Caryophyllene Oxide	0.0347%

1. American Herbal Pharmacopoeia. (2014). *Cannabis Inflorescence: Standards of Identity, Analysis, and Quality Control*. Washington DC: AHP.
 2. US Food and Drug Administration. (2019). *Lead in Food, Foodwares, and Dietary Supplements*. Washington DC: FDA. US Food and Drug Administration. (2019). *Lead in Food, Foodwares, and Dietary Supplements*. Washington DC: FDA.



Customer: Etz Hayim Holdings
Product identity: CA48(C) DRYCP50
Client/Metric ID: .
Laboratory ID: 20-001354-0001

Summary

Potency:

Analyte per 1g	Result	Limits	Units	Status	
CBC per 1g [†]	2.97		mg/1g		CBD-Total per 1g 165 mg/1g
CBD per 1g	165		mg/1g		
CBDV per 1g [†]	0.654		mg/1g		THC-Total per 1g 2.13 mg/1g
CBG per 1g [†]	0.974		mg/1g		(Reported in milligrams per serving)
CBL per 1g [†]	0.117		mg/1g		
Δ9-THC per 1g	2.13		mg/1g		



Customer: Etz Hayim Holdings

Product identity: CA48(C) DRYCP50
Client/Metric ID: .
Sample Date:
Laboratory ID: 20-001354-0001
Relinquished by: Brian Ramos
Temp: 20.5 °C
Serving Size #1: 1 g

Sample Results

Potency per 1g		Batch: 2001126					
Analyte	Result	Limits	Units	LOQ	Analyze	Method	Notes
CBC per 1g [†]	2.97		mg/1g	0.0333	02/05/20	J AOAC 2015 V98-6	
CBC-A per 1g [†]	< LOQ		mg/1g	0.0333	02/05/20	J AOAC 2015 V98-6	
CBC-Total per 1g [†]	2.97		mg/1g	0.0626	02/05/20	J AOAC 2015 V98-6	
CBD per 1g	165		mg/1g	0.0333	02/05/20	J AOAC 2015 V98-6	
CBD-A per 1g	< LOQ		mg/1g	0.0333	02/05/20	J AOAC 2015 V98-6	
CBD-Total per 1g	165		mg/1g	0.0626	02/05/20	J AOAC 2015 V98-6	
CBDV per 1g [†]	0.654		mg/1g	0.0333	02/05/20	J AOAC 2015 V98-6	
CBDV-A per 1g [†]	< LOQ		mg/1g	0.0333	02/05/20	J AOAC 2015 V98-6	
CBDV-Total per 1g [†]	0.654		mg/1g	0.0622	02/05/20	J AOAC 2015 V98-6	
CBG per 1g [†]	0.974		mg/1g	0.0333	02/05/20	J AOAC 2015 V98-6	
CBG-A per 1g [†]	< LOQ		mg/1g	0.0333	02/05/20	J AOAC 2015 V98-6	
CBG-Total per 1g [†]	0.974		mg/1g	0.0626	02/05/20	J AOAC 2015 V98-6	
CBL per 1g [†]	0.117		mg/1g	0.0333	02/05/20	J AOAC 2015 V98-6	
CBN per 1g	< LOQ		mg/1g	0.0333	02/05/20	J AOAC 2015 V98-6	
Δ8-THC per 1g [†]	< LOQ		mg/1g	0.0333	02/05/20	J AOAC 2015 V98-6	
Δ9-THC per 1g	2.13		mg/1g	0.0333	02/05/20	J AOAC 2015 V98-6	
THC-A per 1g	< LOQ		mg/1g	0.0333	02/05/20	J AOAC 2015 V98-6	
THC-Total per 1g	2.13		mg/1g	0.0626	02/05/20	J AOAC 2015 V98-6	
THCV per 1g [†]	< LOQ		mg/1g	0.0333	02/05/20	J AOAC 2015 V98-6	
THCV-A per 1g [†]	< LOQ		mg/1g	0.0333	02/05/20	J AOAC 2015 V98-6	
THCV-Total per 1g [†]	< LOQ		mg/1g	0.0622	02/05/20	J AOAC 2015 V98-6	



Customer: Etz Hayim Holdings
Product identity: CA48(C) DRYCP50
Client/Metric ID: .
Laboratory ID: 20-001354-0003

Summary

Residual Solvents:

All analytes passing and less than LOQ.

Pesticides:

All analytes passing and less than LOQ.

Terpenes:

Analyte	Percent by weight	Percent of Total	Analyte	Percent by weight	Percent of Total
β-Caryophyllene†	0.346	41.54%	(R)-(+)-Limonene†	0.165	19.81%
β-Myrcene†	0.119	14.29%	farnesene†	0.0688	8.26%
Humulene†	0.0654	7.85%	(-)-caryophyllene oxide†	0.0347	4.17%
α-Bisabolol†	0.0342	4.11%	Total Terpenes†	0.833	100.00%

Metals:

Less than LOQ for all analytes.



Customer: Etz Hayim Holdings
Product identity: CA48(C) DRYCP50
Client/Metric ID: .
Sample Date:
Laboratory ID: 20-001354-0003
Relinquished by: Brian Ramos
Temp: 20.5 °C

Sample Results

Solvents		Method EPA5021A				Units µg/g	Batch 2001297	Analyze 02/11/20 12:43 PM			
Analyte	Result	Limits	LOQ	Status	Notes	Analyte	Result	Limits	LOQ	Status	Notes
1,4-Dioxane	< LOQ	380	100	pass		2-Butanol	< LOQ	5000	200	pass	
2-Ethoxyethanol	< LOQ	160	30.0	pass		2-Methylbutane	< LOQ		200		
2-Methylpentane	< LOQ		30.0			2-Propanol (IPA)	< LOQ	5000	200	pass	
2,2-Dimethylbutane	< LOQ		30.0			2,2-Dimethylpropane	< LOQ		200		
2,3-Dimethylbutane	< LOQ		30.0			3-Methylpentane	< LOQ		30.0		
Acetone	< LOQ	5000	200	pass		Acetonitrile	< LOQ	410	100	pass	
Benzene	< LOQ	2.00	1.00	pass		Butanes (sum)	< LOQ	5000	400	pass	
Cyclohexane	< LOQ	3880	200	pass		Ethanol ⁱ	< LOQ		200		
Ethyl acetate	< LOQ	5000	200	pass		Ethyl benzene	< LOQ		200		
Ethyl ether	< LOQ	5000	200	pass		Ethylene glycol	< LOQ	620	200	pass	
Ethylene oxide	< LOQ	50.0	30.0	pass		Hexanes (sum)	< LOQ	290	150	pass	
Isopropyl acetate	< LOQ	5000	200	pass		Isopropylbenzene	< LOQ	70.0	30.0	pass	
m,p-Xylene	< LOQ		200			Methanol	< LOQ	3000	200	pass	
Methylene chloride	< LOQ	600	200	pass		Methylpropane	< LOQ		200		
n-Butane	< LOQ		200			n-Heptane	< LOQ	5000	200	pass	
n-Hexane	< LOQ		30.0			n-Pentane	< LOQ		200		
o-Xylene	< LOQ		200			Pentanes (sum)	< LOQ	5000	600	pass	
Propane	< LOQ	5000	200	pass		Tetrahydrofuran	< LOQ	720	100	pass	
Toluene	< LOQ	890	100	pass		Total Xylenes	< LOQ		400		
Total Xylenes and Ethyl	< LOQ	2170	600	pass							

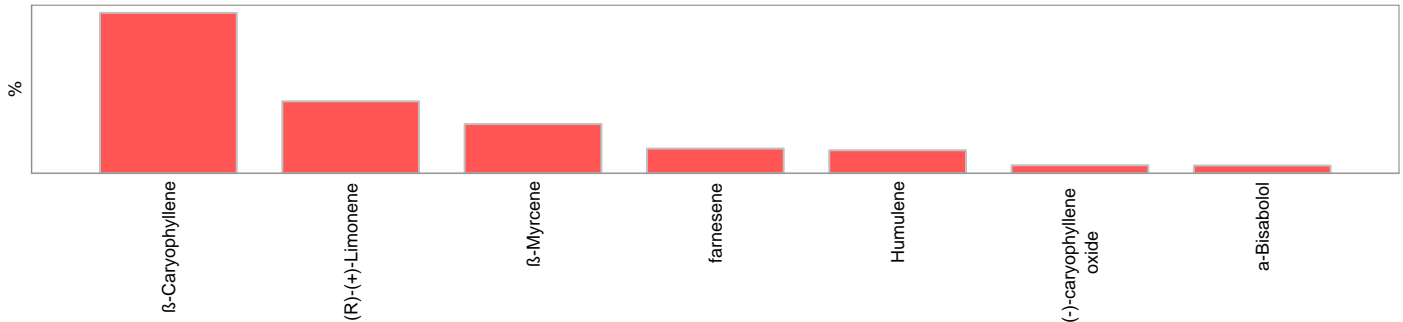


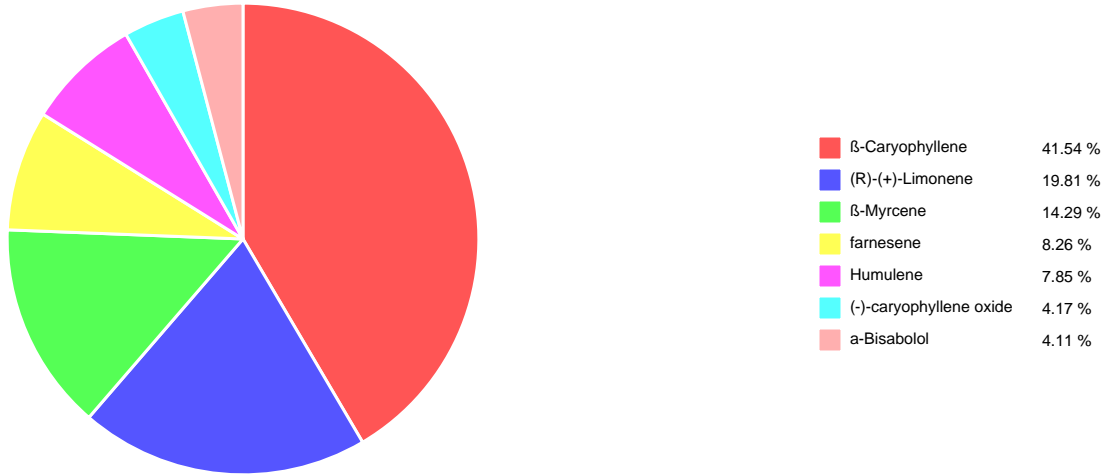
Pesticides Method AOAC 2007.01 & EN 15662 (mod) Units mg/kg Batch 2001431 Analyze 02/14/20 10:24 AM

Analyte	Result	Limits	LOQ	Status	Notes	Analyte	Result	Limits	LOQ	Status	Notes
Abamectin	< LOQ	0.50	0.250	pass		Acephate	< LOQ	0.40	0.250	pass	
Acequinocyl	< LOQ	2.0	1.00	pass		Acetamiprid	< LOQ	0.20	0.100	pass	
Aldicarb	< LOQ	0.40	0.200	pass		Azoxystrobin	< LOQ	0.20	0.100	pass	
Bifenazate	< LOQ	0.20	0.100	pass		Bifenthrin	< LOQ	0.20	0.100	pass	
Boscalid	< LOQ	0.40	0.200	pass		Carbaryl	< LOQ	0.20	0.100	pass	
Carbofuran	< LOQ	0.20	0.100	pass		Chlorantraniliprole	< LOQ	0.20	0.100	pass	
Chlorfenapyr	< LOQ	1.0	0.500	pass		Chlorpyrifos	< LOQ	0.20	0.100	pass	
Clofentezine	< LOQ	0.20	0.100	pass		Cyfluthrin	< LOQ	1.0	0.500	pass	
Cypermethrin	< LOQ	1.0	0.500	pass		Daminozide	< LOQ	1.0	0.500	pass	
Diazinon	< LOQ	0.20	0.100	pass		Dichlorvos	< LOQ	1.0	0.500	pass	
Dimethoate	< LOQ	0.20	0.100	pass		Ethoprophos	< LOQ	0.20	0.100	pass	
Etofenprox	< LOQ	0.40	0.200	pass		Etoxazole	< LOQ	0.20	0.100	pass	
Fenoxycarb	< LOQ	0.20	0.100	pass		Fenpyroximate	< LOQ	0.40	0.200	pass	
Fipronil	< LOQ	0.40	0.200	pass		Fonicamid	< LOQ	1.0	0.400	pass	
Fludioxonil	< LOQ	0.40	0.200	pass		Hexythiazox	< LOQ	1.0	0.400	pass	
Imazalil	< LOQ	0.20	0.100	pass		Imidacloprid	< LOQ	0.40	0.200	pass	
Kresoxim-methyl	< LOQ	0.40	0.200	pass		Malathion	< LOQ	0.20	0.100	pass	
Metalaxyl	< LOQ	0.20	0.100	pass		Methiocarb	< LOQ	0.20	0.100	pass	
Methomyl	< LOQ	0.40	0.200	pass		MGK-264	< LOQ	0.20	0.100	pass	
Myclobutanil	< LOQ	0.20	0.100	pass		Naled	< LOQ	0.50	0.250	pass	
Oxamyl	< LOQ	1.0	0.500	pass		Paclobutrazole	< LOQ	0.40	0.200	pass	
Parathion-Methyl	< LOQ	0.20	0.200	pass		Permethrin	< LOQ	0.20	0.100	pass	
Phosmet	< LOQ	0.20	0.100	pass		Piperonyl butoxide	< LOQ	2.0	1.00	pass	
Prallethrin	< LOQ	0.20	0.200	pass		Propiconazole	< LOQ	0.40	0.200	pass	
Propoxur	< LOQ	0.20	0.100	pass		Pyrethrin I (total)	< LOQ	1.0	0.500	pass	
Pyridaben	< LOQ	0.20	0.100	pass		Spinosad	< LOQ	0.20	0.100	pass	
Spiromesifen	< LOQ	0.20	0.100	pass		Spirotetramat	< LOQ	0.20	0.100	pass	
Spiroxamine	< LOQ	0.40	0.200	pass		Tebuconazole	< LOQ	0.40	0.200	pass	
Thiacloprid	< LOQ	0.20	0.100	pass		Thiamethoxam	< LOQ	0.20	0.100	pass	
Trifloxystrobin	< LOQ	0.20	0.100	pass							



Terpenes				Method J AOAC 2015 V98-6	Units %	Batch 2001394	Analyze 02/13/20 11:40 AM		
Analyte	Result	LOQ	% of Total	Notes	Analyte	Result	LOQ	% of Total	Notes
β-Caryophyllene†	0.346	0.020	41.54%		(R)-(+)-Limonene†	0.165	0.020	19.81%	
β-Myrcene†	0.119	0.020	14.29%		farnesene†	0.0688	0.020	8.26%	
Humulene†	0.0654	0.020	7.85%		(-)-caryophyllene oxide†	0.0347	0.020	4.17%	
α-Bisabolol†	0.0342	0.020	4.11%		(-)-α-Terpineol†	< LOQ	0.020	0.00%	
(-)-Guaiol†	< LOQ	0.020	0.00%		(-)-Isopulegol†	< LOQ	0.020	0.00%	
(-)-β-Pinene†	< LOQ	0.020	0.00%		(+)-Borneol†	< LOQ	0.020	0.00%	
(+)-Cedrol†	< LOQ	0.020	0.00%		(+)-fenchol†	< LOQ	0.020	0.00%	
(+)-Pulegone†	< LOQ	0.020	0.00%		(±)-Camphor†	< LOQ	0.020	0.00%	
(±)-cis-Nerolidol†	< LOQ	0.020	0.00%		(±)-fenchone†	< LOQ	0.020	0.00%	
(±)-trans-Nerolidol†	< LOQ	0.020	0.00%		α-cedrene†	< LOQ	0.020	0.00%	
α-phellandrene†	< LOQ	0.020	0.00%		α-pinene†	< LOQ	0.020	0.00%	
α-Terpinene†	< LOQ	0.020	0.00%		Camphene†	< LOQ	0.020	0.00%	
cis-β-Ocimene†	< LOQ	0.006	0.00%		d-3-Carene†	< LOQ	0.020	0.00%	
Eucalyptol†	< LOQ	0.020	0.00%		γ-Terpinene†	< LOQ	0.020	0.00%	
Geraniol†	< LOQ	0.020	0.00%		Geranyl acetate†	< LOQ	0.020	0.00%	
Isoborneol†	< LOQ	0.020	0.00%		Linalool†	< LOQ	0.020	0.00%	
Menthol†	< LOQ	0.020	0.00%		nerol†	< LOQ	0.020	0.00%	
p-Cymene†	< LOQ	0.020	0.00%		Sabinene†	< LOQ	0.020	0.00%	
Sabinene hydrate†	< LOQ	0.020	0.00%		Terpinolene†	< LOQ	0.020	0.00%	
trans-β-Ocimene†	< LOQ	0.013	0.00%		valencene†	< LOQ	0.020	0.00%	
Total Terpenes	0.833								





Metals

Analyte	Result	Limits	Units	LOQ	Batch	Analyze	Method	Notes
Arsenic	< LOQ		mg/kg	0.0460	2001410	02/13/20	AOAC 2013.06 (mod.)	X, H
Cadmium	< LOQ		mg/kg	0.0460	2001410	02/13/20	AOAC 2013.06 (mod.)	X, H
Lead	< LOQ		mg/kg	0.0460	2001410	02/13/20	AOAC 2013.06 (mod.)	X, H
Mercury	< LOQ		mg/kg	0.0230	2001410	02/13/20	AOAC 2013.06 (mod.)	X, H

Nutrition

Analyte	Result	Limits	Units	LOQ	Batch	Analyze	Method	Notes
Water Activity	0.342	0.650	Aw	0.030	2001499	02/14/20	AOAC 978.18	X



Customer: Etz Hayim Holdings
Product identity: CA48(C) DRYCP50
Client/Metric ID: .
Laboratory ID: 20-001354-0002

Summary

Microbiology:

Less than LOQ for all analytes.



Customer: Etz Hayim Holdings

Product identity: CA48(C) DRYCP50
Client/Metric ID: .
Sample Date:
Laboratory ID: 20-001354-0002
Relinquished by: Brian Ramos
Temp: 20.5 °C

Sample Results

Microbiology								
Analyte	Result	Limits	Units	LOQ	Batch	Analyze	Method	Notes
E.coli	< LOQ		cfu/g	10	2001280	02/13/20	AOAC 991.14 (Petrifilm)	X
Total Coliforms	< LOQ		cfu/g	10	2001280	02/13/20	AOAC 991.14 (Petrifilm)	X
Mold (RAPID Petrifilm)	< LOQ		cfu/g	10	2001287	02/13/20	AOAC 2014.05 (RAPID)	X
Yeast (RAPID Petrifilm)	< LOQ		cfu/g	10	2001287	02/13/20	AOAC 2014.05 (RAPID)	X