



## CONSOLIDATED TEST RESULTS SUMMARY

Please see the following pages for full test results.

<b>SKU: DRYCP50</b>	<b>BATCH #: BK31</b>	<b>NR: Not Reported</b> <b>NA: Not Available</b>
<b>PRODUCT NAME: 50MG FULL SPECTRUM CBD CAPSULES</b>		<b>LOQ: Limit Of Quantitation</b> <b>LOD: Limit Of Detection</b>
<b>LAB NAME: PIXIS LABS</b>	<b>OREGON ACCREDITATION: OR100028</b>	1 g = 10 <sup>-3</sup> kg = 10 <sup>3</sup> mg = 10 <sup>6</sup> µg 1 mg/kg = 1 ppm = 1000 ppb

POTENCY	PER SERVING	PER GRAM	REGULATORY ACTION LEVEL
Cannabidiol (CBD)	50.3 mg/serving	165 mg/g	N/A
Total THC (d9-THC + d8-THC)	0.69 mg/serving	2.26 mg/g	3 mg/g
Cannabigerol (CBG)	0.37 mg/serving	1.20 mg/g	N/A
Cannabinol (CBN)	<LOQ mg/serving	<LOQ mg/g	N/A
Cannabichromene (CBC)	1.08 mg/serving	3.53 mg/g	N/A

HEAVY METALS	PER SERVING	PER GRAM	REGULATORY ACTION LEVEL
Arsenic	<LOQ µg/serving	<LOQ µg/g	10 µg/day <sup>[1]</sup>
Cadmium	<LOQ µg/serving	<LOQ µg/g	4.1 µg/day <sup>[1]</sup>
Lead	0.0397 µg/serving	0.130 µg/g	3.5 µg/day <sup>[2]</sup>
Mercury	<LOQ µg/serving	<LOQ µg/g	2 µg/day <sup>[1]</sup>

PESTICIDES	REGULATORY ACTION LEVEL
None of the 59 pesticides tested found above limit of detection in the sample.	10 ppb <sup>[1]</sup>

RESIDUAL SOLVENTS
None of the 36 residual solvents tested found above limit of detection in the sample.

MICROBIAL	PASS/FAIL
Yeast & Mold	PASS
Coliform	PASS
Water Activity	PASS

TERPENES	% OF SAMPLE
Limonene	0.325 %
β-Caryophyllene	0.278 %
β-Myrcene	0.259 %
α-Bisabolol	0.0852 %

TERPENES	% OF SAMPLE
caryophyllene oxide	0.0578 %
Guaiol	0.0402 %
Humulene	0.0399 %
farnesene	0.0378 %

1. American Herbal Pharmacopoeia. (2014). *Cannabis Inflorescence: Standards of Identity, Analysis, and Quality Control*. Washington DC: AHP.  
2. US Food and Drug Administration. (2019). *Lead in Food, Foodwares, and Dietary Supplements*. Washington DC: FDA. US Food and Drug Administration. (2019). *Lead in Food, Foodwares, and Dietary Supplements*. Washington DC: FDA.



**Customer:** Etz Hayim Holdings  
**Product identity:** BK31 DRYCP50 Bottom  
**Client/Metric ID:** .  
**Laboratory ID:** 19-014495-0003

**Summary**

**Potency:**

Analyte per 1g	Result	Limits	Units	Status	
					CBD-Total per 1g 165 mg/1g
CBC per 1g <sup>†</sup>	3.53		mg/1g		
CBD per 1g	165		mg/1g		
CBDV per 1g <sup>†</sup>	0.816		mg/1g		
CBG per 1g <sup>†</sup>	1.20		mg/1g		
CBL per 1g <sup>†</sup>	0.250		mg/1g		
Δ9-THC per 1g	2.26		mg/1g		
THCV per 1g <sup>†</sup>	0.0654		mg/1g		
THCV-A per 1g <sup>†</sup>	0.0720		mg/1g		
					THC-Total per 1g 2.26 mg/1g
					(Reported in milligrams per serving)



**Customer:** Etz Hayim Holdings

**Product identity:** BK31 DRYCP50 Bottom

**Client/Metric ID:** .

**Sample Date:**

**Laboratory ID:** 19-014495-0003

**Relinquished by:** ETZHH INC

**Temp:** 20.3 °C

**Serving Size #1:** 1 g

### Sample Results

Potency per 1g		Batch: 1911021					
Analyte	Result	Limits	Units	LOQ	Analyze	Method	Notes
CBC per 1g <sup>†</sup>	3.53		mg/1g	0.0333	12/06/19	J AOAC 2015 V98-6	
CBC-A per 1g <sup>†</sup>	< LOQ		mg/1g	0.0333	12/06/19	J AOAC 2015 V98-6	
CBC-Total per 1g <sup>†</sup>	3.53		mg/1g	0.0626	12/06/19	J AOAC 2015 V98-6	
CBD per 1g	165		mg/1g	0.0333	12/06/19	J AOAC 2015 V98-6	
CBD-A per 1g	< LOQ		mg/1g	0.0333	12/06/19	J AOAC 2015 V98-6	
CBD-Total per 1g	165		mg/1g	0.0626	12/06/19	J AOAC 2015 V98-6	
CBDV per 1g <sup>†</sup>	0.816		mg/1g	0.0333	12/06/19	J AOAC 2015 V98-6	
CBDV-A per 1g <sup>†</sup>	< LOQ		mg/1g	0.0333	12/06/19	J AOAC 2015 V98-6	
CBDV-Total per 1g <sup>†</sup>	0.816		mg/1g	0.0622	12/06/19	J AOAC 2015 V98-6	
CBG per 1g <sup>†</sup>	1.20		mg/1g	0.0333	12/06/19	J AOAC 2015 V98-6	
CBG-A per 1g <sup>†</sup>	< LOQ		mg/1g	0.0333	12/06/19	J AOAC 2015 V98-6	
CBG-Total per 1g <sup>†</sup>	1.20		mg/1g	0.0626	12/06/19	J AOAC 2015 V98-6	
CBL per 1g <sup>†</sup>	0.250		mg/1g	0.0333	12/06/19	J AOAC 2015 V98-6	
CBN per 1g	< LOQ		mg/1g	0.0333	12/06/19	J AOAC 2015 V98-6	
Δ8-THC per 1g <sup>†</sup>	< LOQ		mg/1g	0.0333	12/06/19	J AOAC 2015 V98-6	
Δ9-THC per 1g	2.26		mg/1g	0.0333	12/06/19	J AOAC 2015 V98-6	
THC-A per 1g	< LOQ		mg/1g	0.0333	12/06/19	J AOAC 2015 V98-6	
THC-Total per 1g	2.26		mg/1g	0.0626	12/06/19	J AOAC 2015 V98-6	
THCV per 1g <sup>†</sup>	0.0654		mg/1g	0.0333	12/06/19	J AOAC 2015 V98-6	
THCV-A per 1g <sup>†</sup>	0.0720		mg/1g	0.0333	12/06/19	J AOAC 2015 V98-6	
THCV-Total per 1g <sup>†</sup>	0.129		mg/1g	0.0622	12/06/19	J AOAC 2015 V98-6	



**Customer:** Etz Hayim Holdings  
**Product identity:** BK31 DRYCP50  
**Client/Metric ID:** .  
**Laboratory ID:** 19-014495-0007

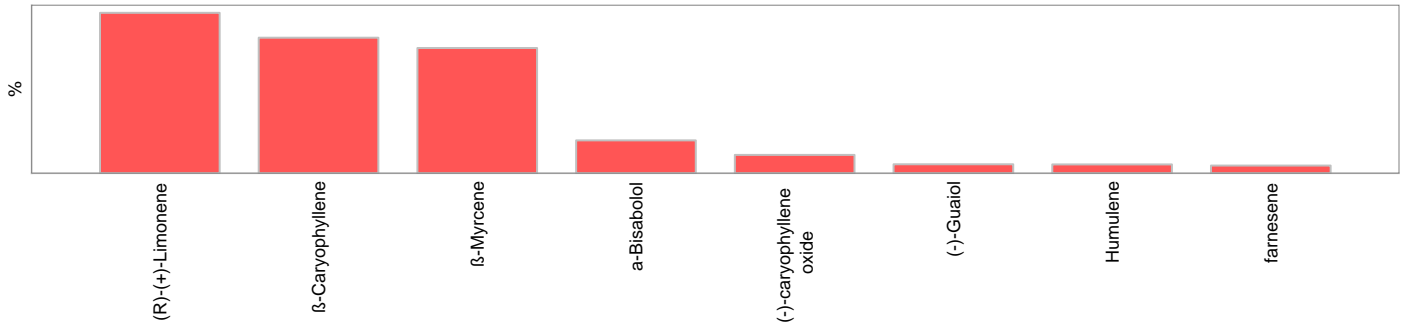
**Summary**

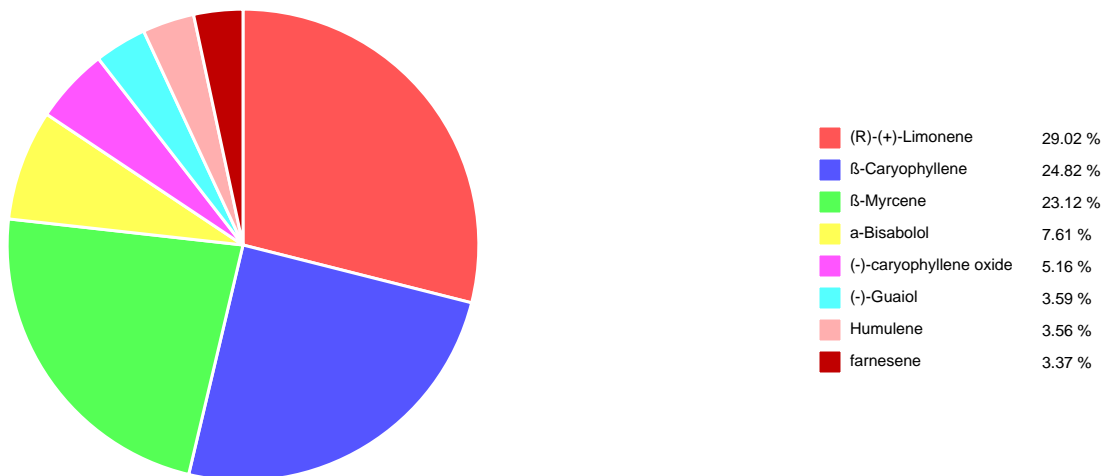
**Terpenes:**

Analyte	Percent by weight	Percent of Total	Analyte	Percent by weight	Percent of Total
(R)-(+)-Limonene†	0.325	29.02%	β-Caryophyllene†	0.278	24.82%
β-Myrcene†	0.259	23.12%	α-Bisabolol†	0.0852	7.61%
(-)-caryophyllene oxide†	0.0578	5.16%	(-)-Guaiol†	0.0402	3.59%
Humulene†	0.0399	3.56%	farnesene†	0.0378	3.37%
<b>Total Terpenes†</b>	<b>1.12</b>	<b>100.00%</b>			



Terpenes				Method J AOAC 2015 V98-6	Units %	Batch 1911271	Analyze 12/12/19 08:36 AM		
Analyte	Result	LOQ	% of Total	Notes	Analyte	Result	LOQ	% of Total	Notes
(R)-(+)-Limonene <sup>†</sup>	0.325	0.020	29.02%		β-Caryophyllene <sup>†</sup>	0.278	0.020	24.82%	
β-Myrcene <sup>†</sup>	0.259	0.020	23.12%		α-Bisabolol <sup>†</sup>	0.0852	0.020	7.61%	
(-)-caryophyllene oxide <sup>†</sup>	0.0578	0.020	5.16%		(-)-Guaiol <sup>†</sup>	0.0402	0.020	3.59%	
Humulene <sup>†</sup>	0.0399	0.020	3.56%		farnesene <sup>†</sup>	0.0378	0.020	3.37%	
(-)-α-Terpineol <sup>†</sup>	< LOQ	0.020	0.00%		(-)-Isopulegol <sup>†</sup>	< LOQ	0.020	0.00%	
(-)-β-Pinene <sup>†</sup>	< LOQ	0.020	0.00%		(+)-Borneol <sup>†</sup>	< LOQ	0.020	0.00%	
(+)-Cedrol <sup>†</sup>	< LOQ	0.020	0.00%		(+)-fenchol <sup>†</sup>	< LOQ	0.020	0.00%	
(+)-Pulegone <sup>†</sup>	< LOQ	0.020	0.00%		(±)-Camphor <sup>†</sup>	< LOQ	0.020	0.00%	
(±)-cis-Nerolidol <sup>†</sup>	< LOQ	0.020	0.00%		(±)-fenchone <sup>†</sup>	< LOQ	0.020	0.00%	
(±)-trans-Nerolidol <sup>†</sup>	< LOQ	0.020	0.00%		α-cedrene <sup>†</sup>	< LOQ	0.020	0.00%	
α-phellandrene <sup>†</sup>	< LOQ	0.020	0.00%		α-pinene <sup>†</sup>	< LOQ	0.020	0.00%	
α-Terpinene <sup>†</sup>	< LOQ	0.020	0.00%		Camphene <sup>†</sup>	< LOQ	0.020	0.00%	
cis-β-Ocimene <sup>†</sup>	< LOQ	0.006	0.00%		d-3-Carene <sup>†</sup>	< LOQ	0.020	0.00%	
Eucalyptol <sup>†</sup>	< LOQ	0.020	0.00%		γ-Terpinene <sup>†</sup>	< LOQ	0.020	0.00%	
Geraniol <sup>†</sup>	< LOQ	0.020	0.00%		Geranyl acetate <sup>†</sup>	< LOQ	0.020	0.00%	
Isoborneol <sup>†</sup>	< LOQ	0.020	0.00%		Linalool <sup>†</sup>	< LOQ	0.020	0.00%	
Menthol <sup>†</sup>	< LOQ	0.020	0.00%		nerol <sup>†</sup>	< LOQ	0.020	0.00%	
p-Cymene <sup>†</sup>	< LOQ	0.020	0.00%		Sabinene <sup>†</sup>	< LOQ	0.020	0.00%	
Sabinene hydrate <sup>†</sup>	< LOQ	0.020	0.00%		Terpinolene <sup>†</sup>	< LOQ	0.020	0.00%	
trans-β-Ocimene <sup>†</sup>	< LOQ	0.013	0.00%		valencene <sup>†</sup>	< LOQ	0.020	0.00%	
<b>Total Terpenes</b>	<b>1.12</b>								







**Customer:** Etz Hayim Holdings  
**Product identity:** BK31 DRYCP50  
**Client/Metric ID:** .  
**Laboratory ID:** 19-014495-0010

### Summary

-----  
**Metals:**

Analyte	Result	Limits
Lead	0.130	

-----



**Customer:** Etz Hayim Holdings

**Product identity:** BK31 DRYCP50

**Client/Metric ID:** .

**Sample Date:**

**Laboratory ID:** 19-014495-0010

**Relinquished by:** ETZHH INC

**Temp:** 20.3 °C

### Sample Results

Metals								
Analyte	Result	Limits	Units	LOQ	Batch	Analyze	Method	Notes
Arsenic	< LOQ		mg/kg	0.0442	1911278	12/11/19	AOAC 2013.06 (mod.)	X
Cadmium	< LOQ		mg/kg	0.0442	1911278	12/11/19	AOAC 2013.06 (mod.)	X
Lead	0.130		mg/kg	0.0442	1911278	12/11/19	AOAC 2013.06 (mod.)	X
Mercury	< LOQ		mg/kg	0.0221	1911278	12/11/19	AOAC 2013.06 (mod.)	X





**Customer:** Etz Hayim Holdings  
**Product identity:** BK31 DRYCP50  
**Client/Metric ID:** .  
**Laboratory ID:** 19-014495-0004

### Summary

**Pesticides:**

*All analytes passing and less than LOQ.*



**Customer:** Etz Hayim Holdings

**Product identity:** BK31 DRYCP50

**Client/Metric ID:** .

**Sample Date:**

**Laboratory ID:** 19-014495-0004

**Relinquished by:** ETZHH INC

**Temp:** 20.3 °C

### Sample Results

**Pesticides**      **Method** AOAC 2007.01 & EN 15662 (mod)      **Units** mg/kg      **Batch** 1911288      **Analyze** 12/12/19 12:51 PM

Analyte	Result	Limits	LOQ	Status	Notes	Analyte	Result	Limits	LOQ	Status	Notes
Abamectin	< LOQ	0.50	0.250	pass		Acephate	< LOQ	0.40	0.250	pass	
Acequinocyl	< LOQ	2.0	1.00	pass		Acetamiprid	< LOQ	0.20	0.100	pass	
Aldicarb	< LOQ	0.40	0.200	pass		Azoxystrobin	< LOQ	0.20	0.100	pass	
Bifenazate	< LOQ	0.20	0.100	pass		Bifenthrin	< LOQ	0.20	0.100	pass	
Boscalid	< LOQ	0.40	0.200	pass		Carbaryl	< LOQ	0.20	0.100	pass	
Carbofuran	< LOQ	0.20	0.100	pass		Chlorantraniliprole	< LOQ	0.20	0.100	pass	
Chlorfenapyr	< LOQ	1.0	0.500	pass		Chlorpyrifos	< LOQ	0.20	0.100	pass	
Clofentezine	< LOQ	0.20	0.100	pass		Cyfluthrin	< LOQ	1.0	0.500	pass	
Cypermethrin	< LOQ	1.0	0.500	pass		Daminozide	< LOQ	1.0	0.500	pass	
Diazinon	< LOQ	0.20	0.100	pass		Dichlorvos	< LOQ	1.0	0.500	pass	
Dimethoate	< LOQ	0.20	0.100	pass		Ethoprophos	< LOQ	0.20	0.100	pass	
Etofenprox	< LOQ	0.40	0.200	pass		Etoxazole	< LOQ	0.20	0.100	pass	
Fenoxycarb	< LOQ	0.20	0.100	pass		Fenpyroximate	< LOQ	0.40	0.200	pass	
Fipronil	< LOQ	0.40	0.200	pass		Fonicamid	< LOQ	1.0	0.400	pass	
Fludioxonil	< LOQ	0.40	0.200	pass		Hexythiazox	< LOQ	1.0	0.400	pass	
Imazalil	< LOQ	0.20	0.100	pass		Imidacloprid	< LOQ	0.40	0.200	pass	
Kresoxim-methyl	< LOQ	0.40	0.200	pass		Malathion	< LOQ	0.20	0.100	pass	
Metalaxyl	< LOQ	0.20	0.100	pass		Methiocarb	< LOQ	0.20	0.100	pass	
Methomyl	< LOQ	0.40	0.200	pass		MGK-264	< LOQ	0.20	0.100	pass	
Myclobutanil	< LOQ	0.20	0.100	pass		Naled	< LOQ	0.50	0.250	pass	
Oxamyl	< LOQ	1.0	0.500	pass		Paclobutrazole	< LOQ	0.40	0.200	pass	
Parathion-Methyl	< LOQ	0.20	0.200	pass		Permethrin	< LOQ	0.20	0.100	pass	
Phosmet	< LOQ	0.20	0.100	pass		Piperonyl butoxide	< LOQ	2.0	1.00	pass	
Prallethrin	< LOQ	0.20	0.200	pass		Propiconazole	< LOQ	0.40	0.200	pass	
Propoxur	< LOQ	0.20	0.100	pass		Pyrethrin I (total)	< LOQ	1.0	0.500	pass	
Pyridaben	< LOQ	0.20	0.100	pass		Spinosad	< LOQ	0.20	0.100	pass	
Spiromesifen	< LOQ	0.20	0.100	pass		Spirotetramat	< LOQ	0.20	0.100	pass	
Spiroxamine	< LOQ	0.40	0.200	pass		Tebuconazole	< LOQ	0.40	0.200	pass	
Thiacloprid	< LOQ	0.20	0.100	pass		Thiamethoxam	< LOQ	0.20	0.100	pass	
Trifloxystrobin	< LOQ	0.20	0.100	pass							



**Customer:** Etz Hayim Holdings  
**Product identity:** BK31 DRYCP50  
**Client/Metric ID:** .  
**Laboratory ID:** 19-014495-0005

### Summary

-----  
**Residual Solvents:**

*All analytes passing and less than LOQ.*

-----



**Customer:** Etz Hayim Holdings

**Product identity:** BK31 DRYCP50

**Client/Metric ID:** .

**Sample Date:**

**Laboratory ID:** 19-014495-0005

**Relinquished by:** ETZHH INC

**Temp:** 20.3 °C

### Sample Results

Solvents		Method EPA5021A				Units µg/g	Batch 1911318	Analyze 12/13/19 11:04 AM			
Analyte	Result	Limits	LOQ	Status	Notes	Analyte	Result	Limits	LOQ	Status	Notes
1,4-Dioxane	< LOQ	380	100	pass		2-Butanol	< LOQ	5000	200	pass	
2-Ethoxyethanol	< LOQ	160	30.0	pass		2-Methylbutane	< LOQ		200		
2-Methylpentane	< LOQ		30.0			2-Propanol (IPA)	< LOQ	5000	200	pass	
2,2-Dimethylbutane	< LOQ		30.0			2,2-Dimethylpropane	< LOQ		200		
2,3-Dimethylbutane	< LOQ		30.0			3-Methylpentane	< LOQ		30.0		
Acetone	< LOQ	5000	200	pass		Acetonitrile	< LOQ	410	100	pass	
Benzene	< LOQ	2.00	1.00	pass		Butanes (sum)	< LOQ	5000	400	pass	
Cyclohexane	< LOQ	3880	200	pass		Ethyl acetate	< LOQ	5000	200	pass	
Ethyl benzene	< LOQ		200			Ethyl ether	< LOQ	5000	200	pass	
Ethylene glycol	< LOQ	620	200	pass		Ethylene oxide	< LOQ	50.0	30.0	pass	
Hexanes (sum)	< LOQ	290	150	pass		Isopropyl acetate	< LOQ	5000	200	pass	
Isopropylbenzene	< LOQ	70.0	30.0	pass		m,p-Xylene	< LOQ		200		
Methanol	< LOQ	3000	200	pass		Methylene chloride	< LOQ	600	200	pass	
Methylpropane	< LOQ		200			n-Butane	< LOQ		200		
n-Heptane	< LOQ	5000	200	pass		n-Hexane	< LOQ		30.0		
n-Pentane	< LOQ		200			o-Xylene	< LOQ		200		
Pentanes (sum)	< LOQ	5000	600	pass		Propane	< LOQ	5000	200	pass	
Tetrahydrofuran	< LOQ	720	100	pass		Toluene	< LOQ	890	100	pass	
Total Xylenes	< LOQ		400			Total Xylenes and Ethyl	< LOQ	2170	600	pass	



**Customer:** Etz Hayim Holdings  
**Product identity:** BK31 DRYCP50  
**Client/Metric ID:** .  
**Laboratory ID:** 19-014495-0008

### Summary

**Microbiology:**

*Less than LOQ for all analytes.*



**Customer:** Etz Hayim Holdings

**Product identity:** BK31 DRYCP50

**Client/Metric ID:** .

**Sample Date:**

**Laboratory ID:** 19-014495-0008

**Relinquished by:** ETZHH INC

**Temp:** 20.3 °C

### Sample Results

Microbiology								
Analyte	Result	Limits	Units	LOQ	Batch	Analyze	Method	Notes
Mold (RAPID Petrifilm)	< LOQ		cfu/g	10	1911239	12/13/19	AOAC 2014.05 (RAPID)	X
Yeast (RAPID Petrifilm)	< LOQ		cfu/g	10	1911239	12/13/19	AOAC 2014.05 (RAPID)	X



**Customer:** Etz Hayim Holdings  
**Product identity:** BK31 DRYCP50  
**Client/Metric ID:** .  
**Laboratory ID:** 19-014495-0009

### Summary

**Microbiology:**

*Less than LOQ for all analytes.*



**Customer:** Etz Hayim Holdings

**Product identity:** BK31 DRYCP50

**Client/Metric ID:** .

**Sample Date:**

**Laboratory ID:** 19-014495-0009

**Relinquished by:** ETZHH INC

**Temp:** 20.3 °C

### Sample Results

Microbiology								
Analyte	Result	Limits	Units	LOQ	Batch	Analyze	Method	Notes
E.coli	< LOQ		cfu/g	10	1911238	12/13/19	AOAC 991.14 (Petrifilm)	X
Total Coliforms	< LOQ		cfu/g	10	1911238	12/13/19	AOAC 991.14 (Petrifilm)	X





**Customer:** Etz Hayim Holdings

**Product identity:** BK31 DRYCP50

**Client/Metric ID:** .

**Sample Date:**

**Laboratory ID:** 19-014495-0006

**Relinquished by:** ETZHH INC

**Temp:** 20.3 °C

### Sample Results

Nutrition								
Analyte	Result	Limits	Units	LOQ	Batch	Analyze	Method	Notes
Water Activity	0.306	0.650	Aw	0.030	1911356	12/13/19	AOAC 978.18	X